



Bear Mountain Cafe

Our specialty items!



Bear Footprint Curry



Deep-fried Shrimp Cutlet Sandwich



Mixed Berry Soda



Hamburger Steak Plate



Honey Kara-age Deep Fried Chicken



Vienna Coffee

Store

A variety of bear goods, including some you can't find anywhere else!



Event Information

All kinds of fun and exciting events!

Hooray!



Let's try bear's skill



Come and see what brown bears can do!

Bear Athletic

Guess which duck will win and get a prize!



Duck Race

Check our website for information and details on each event!



Hours

Period	Open year-round	10/21~4/20	4/21~10/20
Open		9:30	9:00
Close		16:30	17:00

*Last entry to the park is 40 minutes before closing time.
*Opening hours are subject to change. The park may be closed due to inclement weather at the top of the mountain or for ropeway inspections.
Please check the latest operating conditions on our website before visiting the park.

Shuttle Bus Service

Free shuttle bus service available from the Noboribetsu Onsen area to the Ropeway Station!

Hotels in the Noboribetsu Onsen area | Jigokudani
Noboribetsu Onsen Bus Terminal
Tourist Information Center
TEL.0143-84-2225
Feel free to call the number above!

*Free shuttle service is available only in the Noboribetsu Onsen area.
*Free shuttle service is available in the area marked in yellow.

Map labels: Oyunuma River Natural Footbath, Noboribetsu Jigokudani (Hell Valley), Station, Noboribetsu Onsen Bus Terminal, *Transfer to the free shuttle bus here, Noboribetsu Bear Park, Ropeway, Noboribetsu Onsen, Noboribetsu Date Jidaimura, Wakasaimo Honpo Noboribetsu Higashi Store, Noboribetsu Marine Park Nixe, Noboribetsu Higashi Interchange, JR Noboribetsu Station, Pacific Ocean, Muroran Line, Hokkaido, To Tomakomai Chitose, Sapporo.

Coming to the Park

From Sapporo

- By train:** Approx. 70 min. by JR Limited Express and 15 min. by bus from JR Noboribetsu Station
- By car:** Approx. 60 min. from Sapporo Kita Interchange to Noboribetsu Higashi Interchange. Approx. 10 min. from Noboribetsu Higashi Interchange to Noboribetsu Onsen

From New Chitose Airport

- By train:** Approx. 47 min. by JR Limited Express and approx. 15 min. by bus from JR Noboribetsu Station
- By bus:** Approx. 70 min. by Donan Bus from New Chitose Airport to Noboribetsu Onsen
- By car:** Approx. 40 min. from New Chitose Airport (Tomakomai Higashi Interchange) to Noboribetsu Higashi Interchange. Approx. 10 min. from Noboribetsu Higashi Interchange to Noboribetsu Onsen



Shikotsu-Toya National Park
Noboribetsu Onsen Cable Inc.
Noboribetsu Bear Park

224 Noboribetsu Onsen-cho,
Noboribetsu-shi, Hokkaido, 059-0551
TEL 0143-84-2225 (Main)
FAX 0143-84-2857
<https://bearpark.jp/>

Noboribetsu Bear Park



Bear Park

The Ezo brown bear was once revered as Kamui (God) by the Ainu people. A large number of bears live carefree in the deep forests. Each of the dynamic and charming bears has its own unique personality making for an exciting experience!

First Enclosure



Second Enclosure



Do you dare come this close?

Face to face with a bear through the very popular Human Cage!

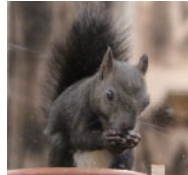
You may see a baby bear in the spring!

Cub Enclosure



Squirrel Enclosure

Encounter some adorable squirrels!!



Ropeway

A high-speed gondola (usually seating six people) runs from the base station to the summit, a total length of 1,260 m, ascending 300 m high in approximately 7 minutes.



The TobaGO! (only in winter)

A unique gondola is in operation which hangs salmon on the gondola and dries them in the cold to make salmon jerky (Visitors are not allowed to ride on the gondola). The dried salmon jerky is used as feed for the bears.



Spectacular view during the autumn foliage season!



Ropeway Station

Yukara-no-Sato (Ainu Village)

Experience Ainu Culture!

The Ainu lifestyle has been accurately reproduced to preserve the priceless cultural heritage of the Ainu people and to pass on tangible cultural assets to future generations. Many important everyday tools of the Ainu people are on display.



Brown Bear Museum

This museum is one of the few museums of its kind in the world!



Trick art photo



Discover how big a cub bear can be!

Lake Kuttara

The lake has a circumference of 8 km, a surface height of 257 m, and a depth of 145 m.

The panoramic view from the observatory on the roof of the Brown Bear Museum is breathtaking! The primeval forest of Shikotsu-Toya National Park is another must-see attraction!

