



A thrillin encounter!

① First Farm (male)

Between May and July, the "battle to be boss" is a sight to be seen as bears struggle to reach the top.

Don't miss the human cage!

Located in the No.1 Enclosure, the view of the bears from the human cage is so thrilling. Designed as if the human is in the cage, experience the feeling of a hunted animal as the bears surround you.



TRANSPORTATION

From Sapporo

JR → 70 minutes aboard limited express, then 13 minutes by bus from Noboribetsu Station.

Car → 60 minutes from Sapporo-Kita to Noboribetsu-Higashi on expressway, then drive 10 minutes in the direction of Noboribetsu Hot Springs.

From New Chitose Airport

JR → 47 minutes aboard limited express, then 13 minutes by bus from Noboribetsu Station.

Bus → 70 minutes aboard Donan Bus.

Car → 40 minutes from Tomakomai-Higashi to Noboribetsu-Higashi on expressway, then drive 10 minutes in the direction of Noboribetsu Hot Springs.



BUSINESS HOURS

Season	2/1 ~ 3/31	4/1 ~ 6/30 10/1 ~ 1/31	7/1 ~ 9/30
Ticket Office Opening	8:30	8:30	8:00
Closing Time	16:00	16:30	17:00

※Please be reminded that ticket office closes 40 minutes prior to the closing time.

OPEN ALL YEAR (Except for maintenance days in late November / early December)

Shikotsu-Toya National Park

Noboribetsu Onsen Cable Co. Ltd.

224 Noboribetsu-Onsen, Noboribetsu, Hokkaido 059-0551 Japan
TEL.0143-84-2225 FAX.0143-84-2857

Website <http://www.bearpark.jp>



Noboribetsu Bear Park

のぼりべつ
クマ牧場

Noboribetsu Bear Park

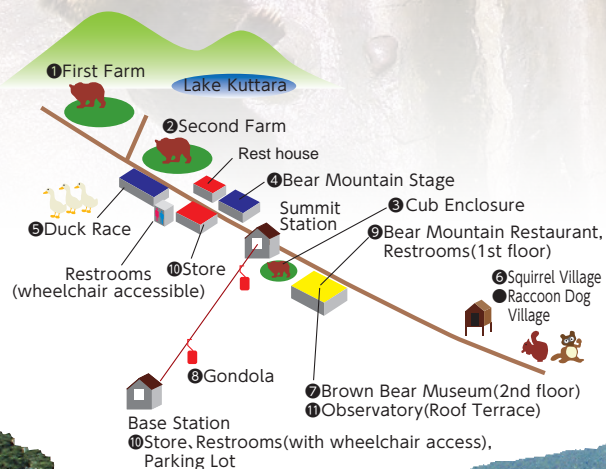
PARK INFORMATION



Lake Kuttara

COME MEET THE BEARS.

Brown bears are the largest species of animals in Hokkaido and were worshiped by Ainu, the native Hokkaido people, as the God. There are approximately 2,000 brown bears in Hokkaido and the number is reported to be on the decline. Noboribetsu Bear Park is located atop "Bear Mountain" that site in the deep forest of the Lake Kuttara area. Farming, observing and studying of brown bears started in October 1958 and recorded a major success. The numbers of bears are now over a hundred, from only eight at the beginning, and happily ever after is the way they live now.



Second Farm (female)

Charming Female Bears

② Second Farm (female)

Female brown bears are very active, as they stand on two legs, lie flat or make funny poses to attract the attention of visitors with snacks. Some of the bears are very skillful and climb the metal tree-like structure to the highest point to claim the snacks. Here you can observe the bears' movements, skill and cleverness.



Are they stuffed toys?
No, they're moving!

③ Cub Enclosure

Cute baby bear cubs that look just like cuddly toys.

Japanese Black Bear Solo show!

④ Japanese Black Bear attraction

Using the nation's first remote training methods, the bears utilize their abilities to climb trees, cross logs and even to ride a swing as part of the Black Bear show on an all-weather stage.



⑩ Lake Kuttara Observatory

The view from the observatory is one of the nation's clearest lakes, Lake Kuttara. Enjoy the great panoramic scenery of Shikotsu-Toya National Park.



There are lots more attractions at the Bear Park



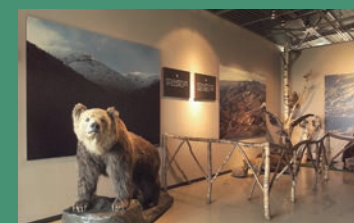
⑤ Duck Race

Pretty duck racers with colorful ribbons will show you heated side-by-side battles.



⑥ Squirrel Village

The rearing and displaying of Hokkaido squirrels that inhabit the region. They are very timid animals and sometimes hide in their nests.



⑦ Brown Bear Museum

The world's only specialist bear museum displaying valuable materials on the lives of bears. A wide variety of approximately 500 exhibits, including mounted specimens and skeletons, as well as panel displays and other materials that show the behavior, habitats and history of bears.



⑧ Gondola

The only way to access the Bear Park is via the gondolas (6-person) from the ropeway base station in the center of Noboribetsu Onsen. The gondolas depart every 15 seconds on the 1,300-m-long ride to the Bear Park 300 m above.



⑨ Bear Mountain Restaurant

Enjoy a local dish that has been designated as one of the Hokkaido heritages—jingsukan, which is a specialty of the Kumayama Shokudo restaurant.



⑩ Stores

There are shops at both the summit and base stations of Bear Mountain, and a wide variety of products and original goods are available. Why not stop by after visiting the Bear Park?